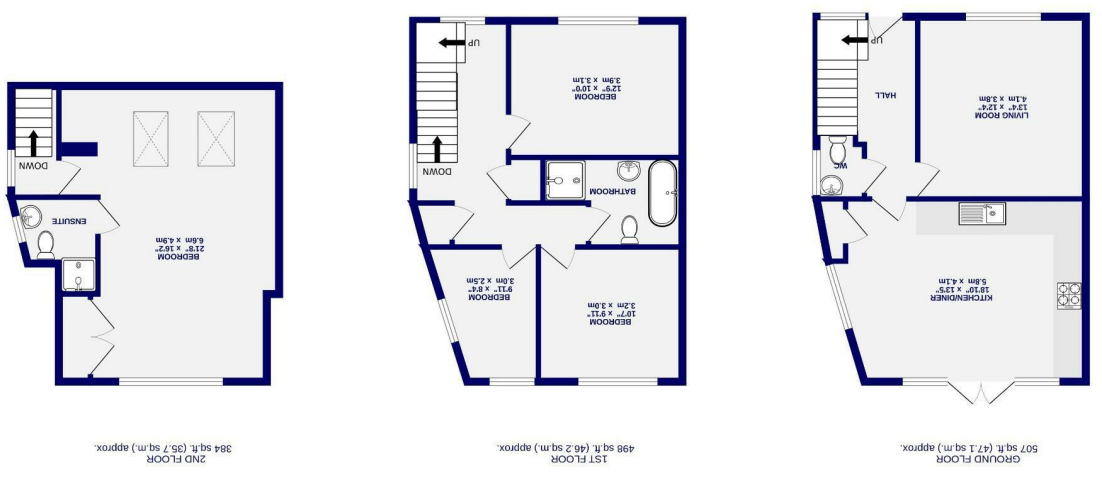


These particulars have been prepared as accurately and as reliably as possible, but should not be relied upon as 'statement of fact'. If there is any point which is of particular importance to you, please contact the office and we would be pleased to check the information. We have not tested any services, appliances, equipment or facilities and nothing in these particulars should be deemed to be a statement that they are in good working order, or that the property is in good structural condition or otherwise. Any statements contained in these particulars are given as a guide only and are not precise. Purchasers must satisfy themselves by inspection or by otherwise regarding the items mentioned above and as to the correctness of each of the areas, measurements, floor plans or distances referred to are given as a guide only and are not precise. No person in the employment of Ashtons has any authority to make or give any representation or warranty whatsoever in relation to this property or these particulars nor enter into any contract relating to the property on behalf of the vendor.

# Sawyers Crescent Copmanthorpe, York YO23 3YA

- Freehold
- Council Tax Band - D
- Stunning Family Home
- Four Bedrooms
- Bathroom, Ensuite & W.C
- Driveway Parking
- Sought After Village Setting
- Immaculately Presented
- Open Plan Kitchen Diner
- EPC B



# Sawyers Crescent Copmanthorpe, York YO23 3YA

£395,000

4 2

Situated within the highly sought-after village of Copmanthorpe, to the southwest of York, is this immaculately presented modern family home, purchased from new by the current owners within the last ten years. Offering spacious and well-proportioned accommodation arranged across three floors, this property enjoys a private rear garden and off-street parking to the front, whilst being conveniently positioned close to a range of local amenities, well-regarded schools, and excellent transport links into York city centre.

Internally, the property opens into a generous entrance hallway which sets the tone for the spacious accommodation throughout. Positioned to the front is a substantial living room, and to the rear is a stunning kitchen diner fitted with a range of modern wall and base units complemented by a selection of integrated appliances, providing both practicality and style. French doors open directly onto the rear garden, allowing natural light to flood the space and creating a seamless connection between indoor and outdoor living. Completing the ground floor accommodation is a useful downstairs WC.

To the first floor are three well-proportioned bedrooms, served by a contemporary family bathroom, in addition to a spacious landing.

Occupying the entirety of the second floor is the impressive principal bedroom suite, generous enough to accommodate a full suite of furniture. A dormer window enjoys pleasant views across neighbouring fields, whilst the room also benefits from useful eaves storage and a modern walk-in shower en-suite.

